



# DEFENSE & SECURITY

Portative Camera Equipments

[www.syt-technologies.com](http://www.syt-technologies.com)

# Presentation

**SYT Technologies** develops and manufactures innovative optronic vision systems thanks to its advanced technological expertise.

Our objective is more accurate vision in all weather conditions. High performance and reliability have enabled SYT to become a major French player in the field of vision and optronics.

Its systems, adapted to terrestrial and maritime applications, meet the most demanding requirements and needs. Whatever your theater of operations, armed forces, internal security or sensitive sites, **SYT** supports you and meets all your needs of detection, recognition and identification.

# Table of contents

Presentation .....	2
Portables Equipment .....	5-11
SR series.....	12-13
MR series .....	14-15
TL series.....	16-17
Accessories .....	18-19



# IDENTIFY SURVEILLANCE UNDENIABLE PERFORMANCES



## Mobile

Total stealth  
Fast to deploy



# Portables EQUIPMENTS

The SR, MR and TL series maintains you in a total stealth, in any urban scene for intelligence missions, or data collection. With day/night vision, due to the quality of its visible and Aideo's functionalities are native. These series specifically meet your needs for surveillance, identification and undercover operations.

## Adaptable

Discret  
Easy handling



## Wireless

Autonomous solutions  
Space-saving





## REMOTE CONTROL

Our systems can be controlled through a static or mobile station. Besides the native image and video's recording, **SYT** offers different image processing softwares to omlprove your recording quality. Many functionalities: Pan/tilt control, batttery connection, micro SD card, far/near focus. Grip ergonomic and dual analog control sticks produce the definitve mobilie experience.







## ACCESSORIES

Our systems are provided with many accessories for a practical use while remaining out of sight in all circumstances:

- Transport: custom bag
- Autonomy: batteries
- Control: remote control

Thanks to their picatinny rails, our systems can also integrate your own equipments (pointer, illuminator, rangefinder, GPS...).





## MATERIALS AND HIGH QUALITY

Different colors available for all our products.

SR, MR and TL ranges are made of aluminum, materials of choice to withstand the most critical environments.

Paint by anodizing, this surface treatment guarantees better resistance to wear, corrosion and extreme weather conditions. Can be hardened for maritime or other types of environments.



AS 1



BZ 5



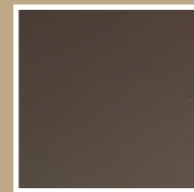
OR 2



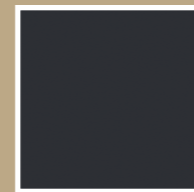
BZ 6



OR 3



BZ 7



NOIR

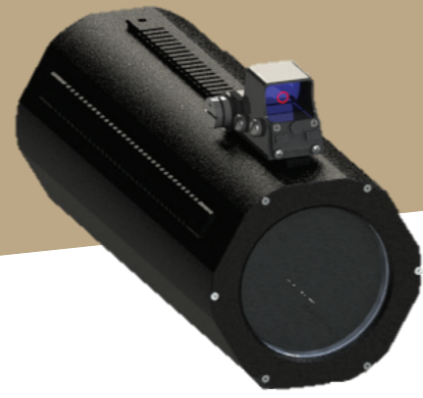




# SR series



SR 500

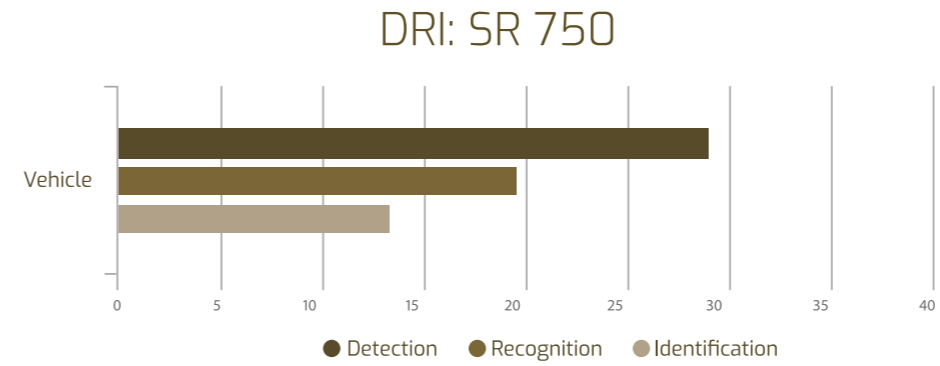
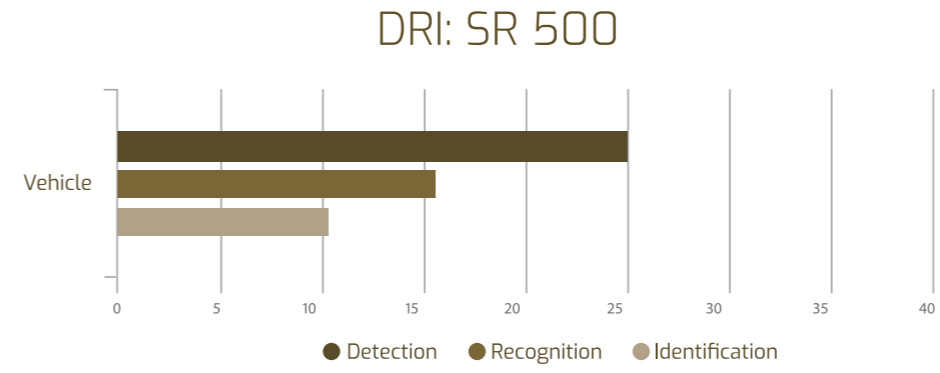


SR 750

With their versatility of use the SR serie portable systems are particularly adapted to the needs of mobile and/or special units for rapid interventions in urban areas. Ideal for blending into the mass with its specially designed accessories.



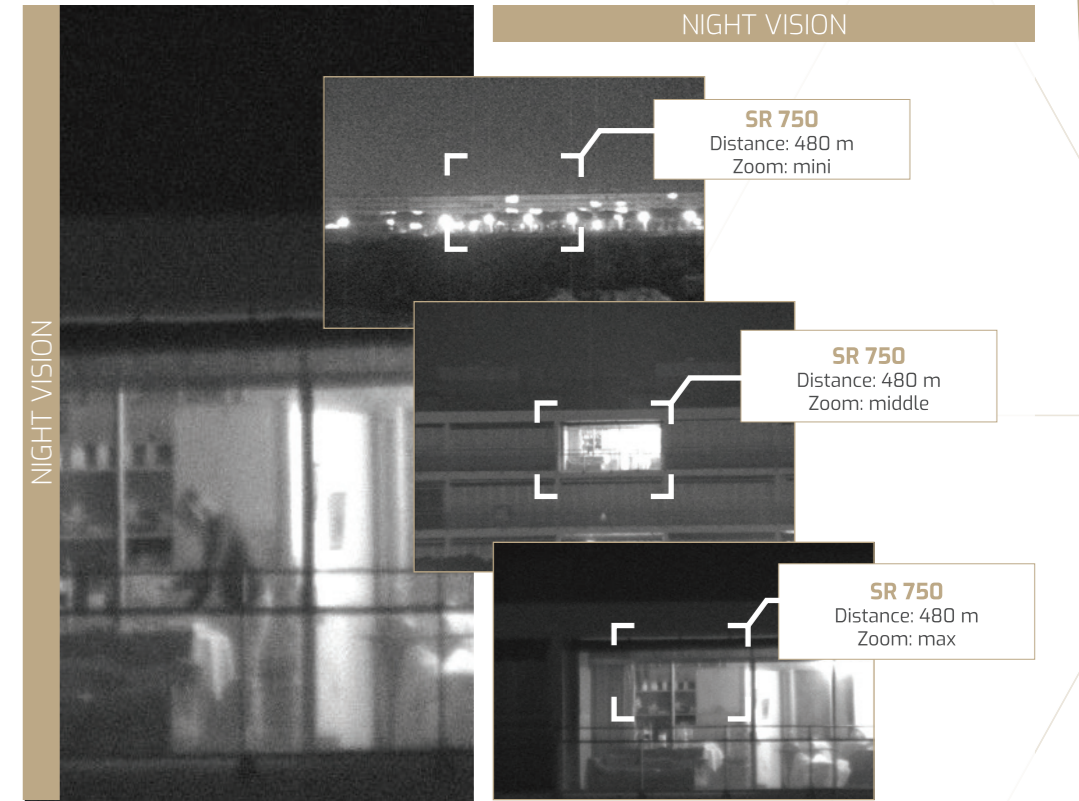
SR 750 distance 500 m day vision



With the SR serie you be able to discreetly identify an individual, read license plates, and monitor infrastructures or people in differents

**SR 500**

Focal: 15,2 - 500 mm  
 Zoom: x33  
 Sensor: EMCCD Monochrome  
 Weight: <5kg



sceneries. Thanks to its undeniable performances, this systems is extremely efficient in the fight against banditry or terrorism.

**SR 750**

Focal: 22,8 - 750 mm  
 Zoom: x33  
 Sensor: EMCCD Monochrome  
 Weight: <5kg



# MR series

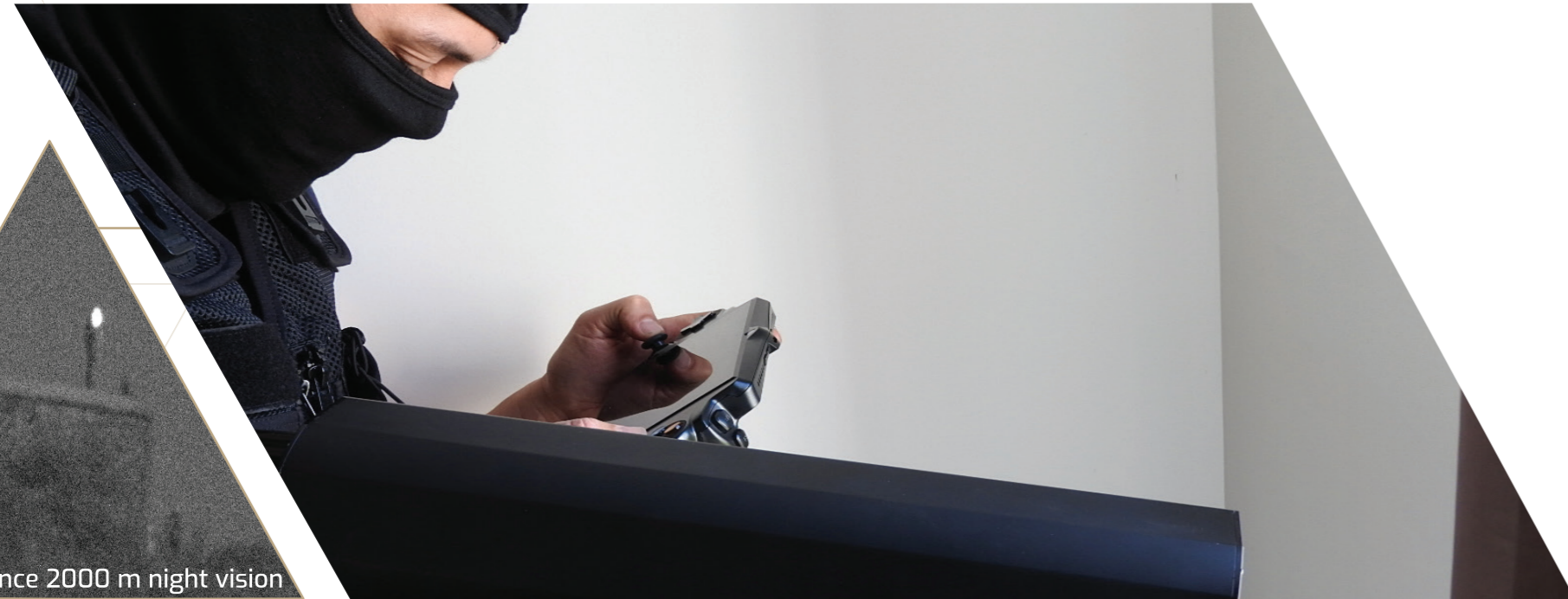


MR 1500



MR 2000

Designed for tactical surveillance and infiltration operations, the MR range operates day as well as night. Portable, these mobile systems, with or without battery, identify your target, observe or recognize the theater of operations in a discreet manner. Rapid deployment (less than 2 minutes). Can integrate all kinds of accessories.



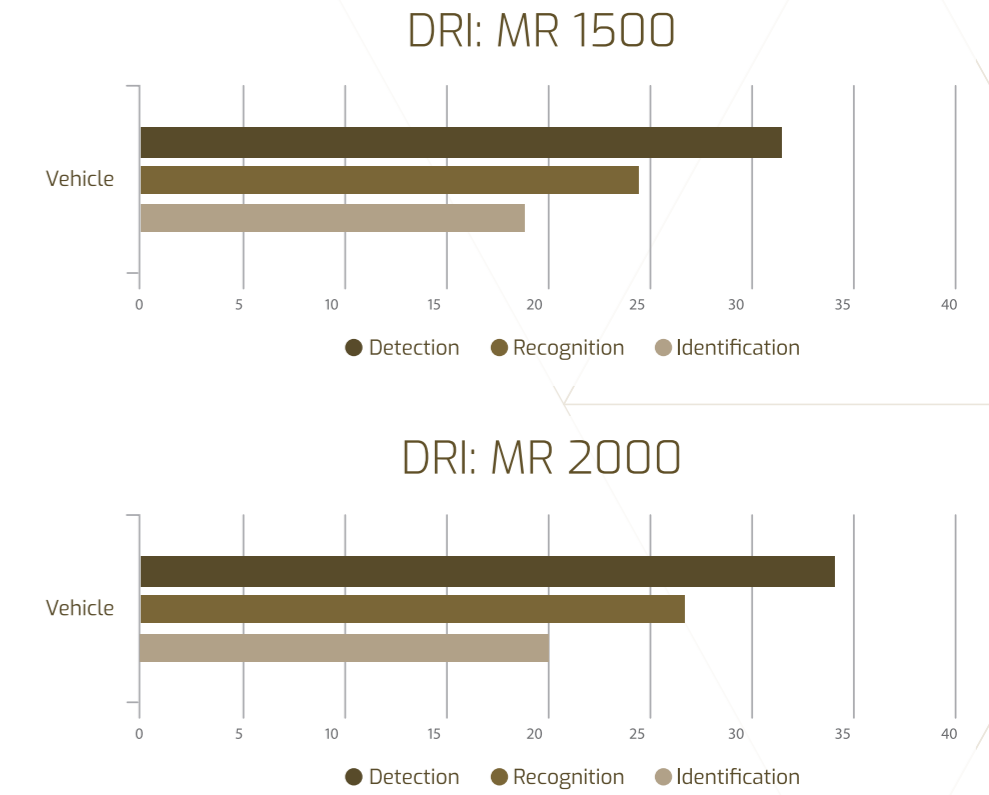
MR 2000 distance 2000 m night vision



With MR series, each and every detail will be at your reach. The MR systems stand out for their impressive identification skills with their powerful optical x60 zoom.

## MR 1500

Focal: 2,5 - 1500 mm  
Zoom: x60  
Sensor: EMCCD Monochrome  
Weight: <9kg



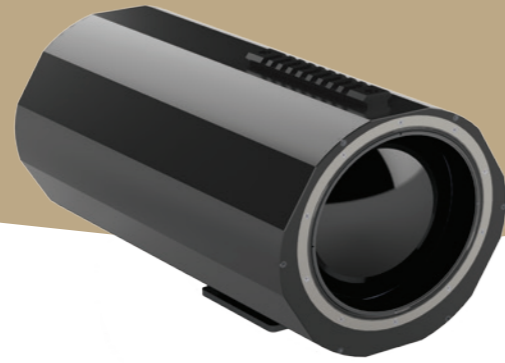
As portative products, they are perfectly suitable for surveillance operations in urban area. Ergonomic and adaptable, you will deploy them in no time on a pan tilt or a tripod.

## MR 2000

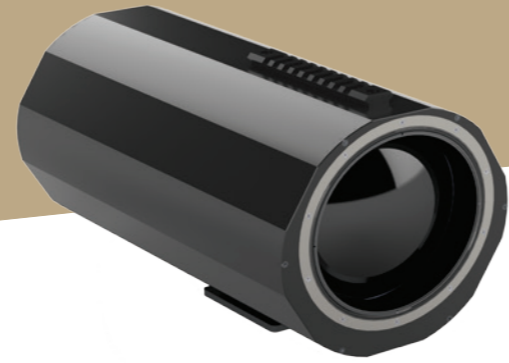
Focal: 6,7 - 2000 mm  
Zoom: x60  
Sensor: EMCCD Monochrome  
Weight: <10kg



# TL series



TL 130



TL150



TL 150 distance 430 m day vision



TL 135 and TL 150 thermal systems are designed for mobile surveillance in rural or urban perimeters. The two fields of view, x1-x3, provide to intervention forces new capacities of night and day vision. Their thermal channel with LWIR non-cooled sensor enables you from a hidden perspective to do a long range identification of potential threat day/night. Thanks to its fast deployment, your team will be promptly operational.



The first thermal portable systems with the TL range. Designed for mobile, rural or urban surveillance, they provide units with new night vision capabilities. The non-cooled LWIR technology allows identification from a hidden station from a great distance.

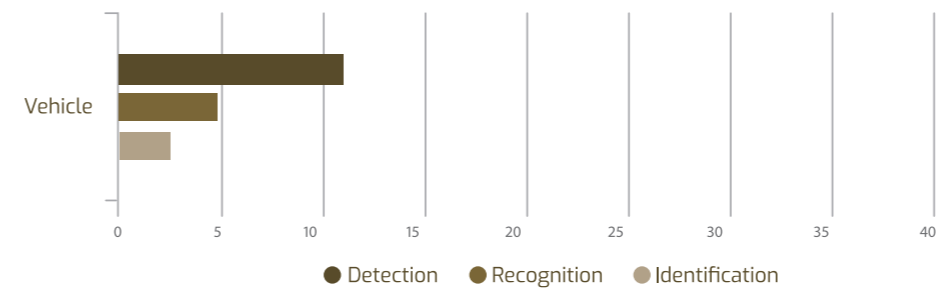
## TL 135

Focal: 45 - 135 mm  
Zoom: x3  
Sensor: LWIR uncooled 17 μm  
Weight: <5kg

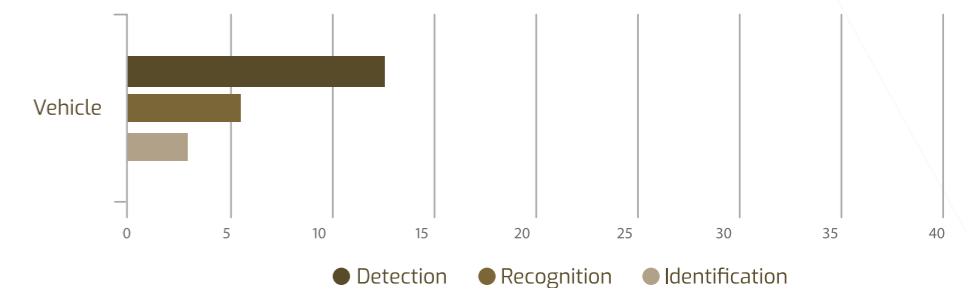
## TL 150

Focal: 25 - 150 mm  
Zoom: x6  
Sensor: LWIR uncooled 17 μm  
Weight: <8,5kg

## DRI: TL 135



## DRI: TL 150





# ACCESSORIES

## CONTROL



Laptop with HMI



Joystick and video controller



Software Program



Remote control

SYT

## TRANSPORT



Transport bag



Transport bag



Transport case

## MOBILITY / WIRELESS



Battery



Battery charger



WIFI device

## SUPPORT



Long tripod + fluid head

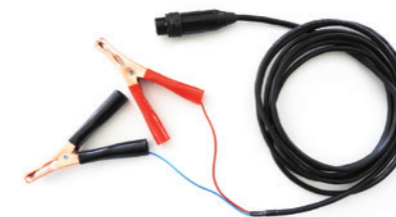


Pan&Tilt



Short tripod

## CABLAGE



Supply cable



Supply cable



Main adapter



[www.syt-technologies.com](http://www.syt-technologies.com)

▶ **SYT** ◀

SYT Technologies - Technopôle Pégase

59 impasse Louis Blériot  
84918 AVIGNON - France

+33 (0)4 66 27 61 05  
[sales@syt-technologies.com](mailto:sales@syt-technologies.com)